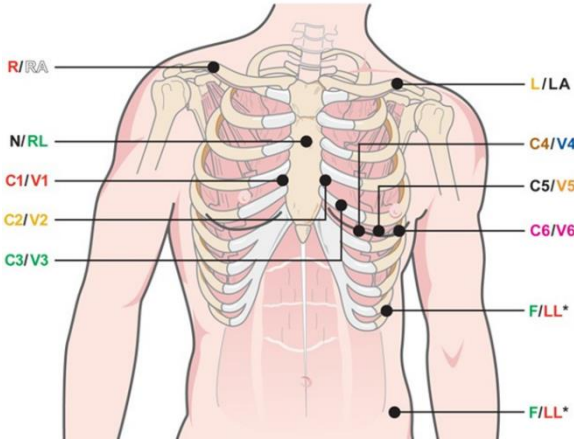




12-LEAD HOLTER ELECTRODE PLACEMENT



LEAD PLACEMENT

Limb Electrode		
AAMI	IEC	Placement
RA	R	On or below the right clavicle as shown
LA	L	On or below the left clavicle as shown
RL	N	Reference or ground lead, should be placed in a stable location of the body
LL	F	Lower-left side of body in a stable location, as close to the hip as possible

Precordial Electrode		
AAMI	IEC	Placement
V1	C1	Fourth intercostal space at the right sternal border
V2	C2	Fourth intercostal space at the left sternal border
V3	C3	Midway between V2 and V4
V4	C4	Fifth intercostal space at the left of the midclavicular line
V5	C5	Anterior axillary line on the same horizontal level as V4
V6	C6	Mid-axillary line on the same horizontal level as V4 and V5



NOTE AND CAUTION: Placement of the Left Leg (LL) electrode in the original Mason-Likar position increases the similarity of the acquired ECG with a standard 12-lead ECG and is therefore

recommended; however, clothing may interfere with this position and increase the amount of artifact. The modified position may decrease the sensitivity of inferior ECG leads and cause axis shift with respect to the standard 12-lead ECG. Accurate skin preparation and suitable clothing are the most important factors in excessive artifact prevention.

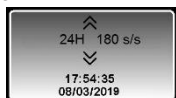


Hillrom™

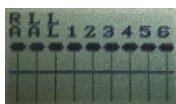
Welch Allyn® H12+™ 12-lead Holter

To Begin a Recording Session

1. Remove battery door and insert H12+ SD card into card slot.
2. Insert a new AA battery and reinstall battery door.
3. View record duration and sample rate (reference user manual if change needed).



4. Navigate to **LEADCHECK** then press **ENTER** key to check electrode impedance levels.



Press **ENTER** key to exit.

5. Navigate to **DISPLAY ECG** then press **ENTER** key. Press **UP/RIGHT** or **DOWN** key to view each lead.



Press **ENTER** key to exit.

6. Navigate to **ENTER ID** then press **ENTER** key. Use keys to select the patient ID.



When complete select **End** to exit.

7. Navigate to **RECORD** and then press **ENTER** key to begin recording session.



Set Date and Time

H12+ has an internal back-up battery for date and time, with expected life of three to five years.

To set the date and time, follow instructions below:

1. Navigate to **CONFIGURE** then press **ENTER** key.
2. AT **DATE/TIME** press **ENTER** key.
3. Navigate to **SET MINUTE**, **SET HOUR**, **SET DAY**, **SET MONTH** or **SET YEAR** by pressing the **DOWN** key and then press the **ENTER** key.
4. Press the **UP/RIGHT** key to increase a value, **DOWN** key to decrease a value. Press **ENTER** key to store the updated value(s).
5. Navigate to **DONE** by pressing the **UP/RIGHT** or **DOWN** key and then press the **ENTER** key. Repeat to return to **CONFIGURE**.

An ambulatory 12-lead ECG obtained with torso-located limb electrodes is not equivalent to a conventional diagnostic ECG.

Welch Allyn® and H12+™ are registered trademarks of Welch Allyn.

REF 80025607 Ver. A
Revision date: 2019-08